

[illegible]

Rank: A : Replace with new parts immediately. B : Replace with new parts at time of repair. C : Replace with new parts at time of overhaul.

Interchangeability:

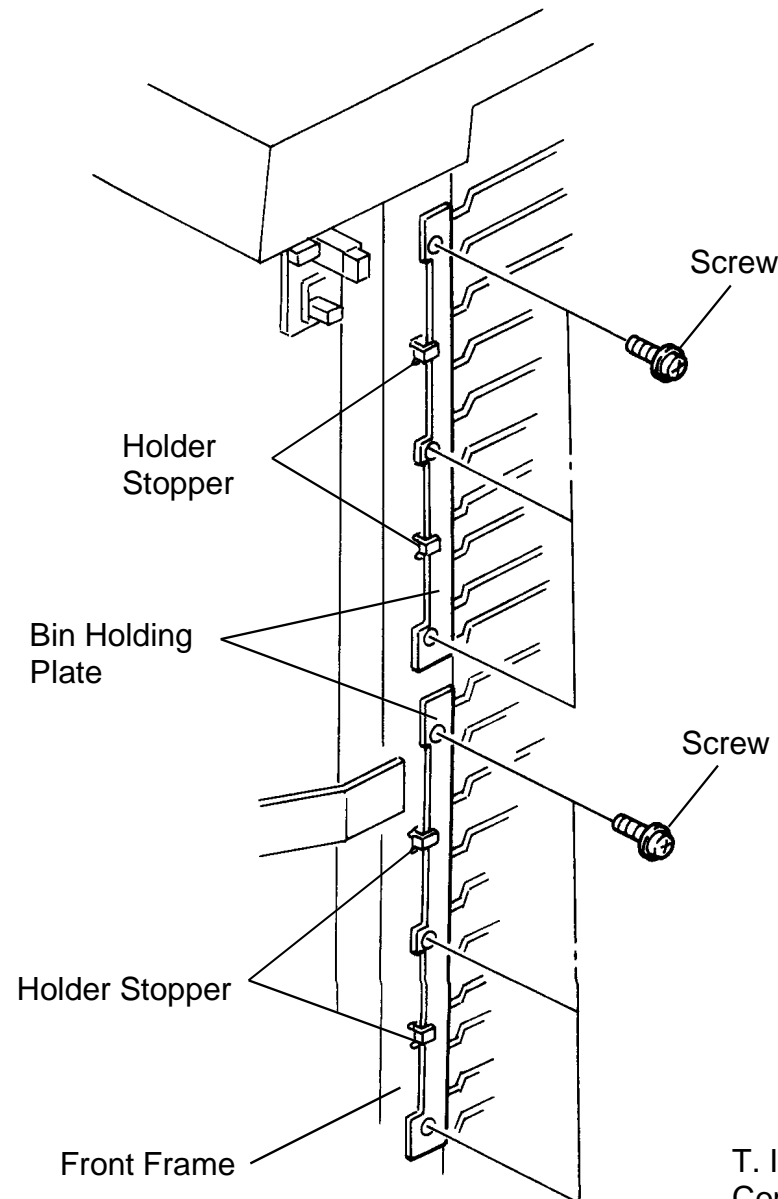
(1) When old and new parts are not mutually interchangeable, use additional parts or an assembly part as indicated in "Parts needed for replacement by new part" to install the new part.

(2) The mark to the left of the slash indicates whether the old part can be used in the new machine, and the mark to the right indicates whether the new part can be used in the old machine. x = Not interchangeable o = Interchangeable

DETAILS OF MODIFICATION

If the bins are pulled out strongly, the bins may sometimes be dislodged. This may cause a bin sensor malfunction. To correct this, the production machines have been modified as follows:

1. Two bin holding plates have been mounted on the front frame.
2. For these plates six screw holes and four holder stoppers have been made on the front frame. However, the part number of the front frame (A3544115, Index 25, Page 23) remains the same.



T. Ito, Manager
Copier Technical Support

| MODEL NAME | V/Hz | DESTINATION | CODE | SERIAL NUMBER |
|---------------------------|---------------------|-------------|---------|---------------------|
| SAVIN S/S for 9080 | 120/60 | USA, CANADA | A354-15 | From 1st Production |
| NRG SS428A | 120/60 | S. AMERICA | A354-16 | From 1st Production |
| RICOH ST23A | 120/60 | USA, CANADA | A354-17 | A3082060001 |
| NRG SS428A | 220, 230, 240/50 | EUROPE etc. | A354-25 | 4962070001 |
| RICOH ST23A | 220, 230, 240/50 | EUROPE etc | A354-27 | A3082060131 |
| SAVIN TANDEM S/S for 9080 | 120/60 | USA, CANADA | A354-55 | From 1st Production |
| NRG SS428B | 120/60 | S. AMERICA | A354-56 | From 1st Production |
| RICOH ST23B | 120/60 | USA, CANADA | A354-57 | A3092060001 |
| NRG SS428B | 220, 230, 240/50 | EUROPE etc. | A354-65 | 4772060001 |
| RICOH ST23B | 220, 230, 240/50 | EUROPE etc. | A354-67 | A3092070001 |

| Model | | F200 Sorter Stapler | | | | | | Volt/Hz | Date of Modification | Serial Number | |
|-------------------------|---------------|-------------------------|---------------|---------------------|--------|------------------------|----------------------|---|----------------------|---------------|------|
| Modified Article | | Leveling Foot Guide | | | | | | | | | |
| Reason for Modification | | To facilitate servicing | | | | | | | | | |
| | | | | | | | | | | | |
| | | | | | | | | | | | |
| Draw No. | Old Parts No. | | New Parts No. | Description | A.B.C. | Q'ty Used Old → New | Inter-change-ability | Part needed for replacement by new part | | Parts Catalog | |
| | | | | | Rank | | | Part No. | Description | Index No. | Page |
| | 54461086 | | | Leveling Foot Guide | | | | | | | |
| | | | AH013002 | Leveling Shoe | | 1 → 1 | X/O | | | 23 | 33 |
| | 11060411 | | | Bushing - 11.5mm | | 0 → 1 | | | | 116 | 33 |
| | | | | | | | | | | | |
| | | | | | | | | | | | |
| | | | | | | | | | | | |
| | | | | | | | | | | | |
| | | | | | | | | | | | |
| | | | | | | | | | | | |
| | | | | | | | | | | | |
| | | | | | | | | | | | |
| | | | | | | | | | | | |
| | | | | | | | | | | | |

Rank: A : Replace with new parts immediately. B : Replace with new parts at time of repair. C : Replace with new parts at time of overhaul.

Interchangeability:

(1) When old and new parts are not mutually interchangeable, use additional parts or an assembly part as indicated in "Parts needed for replacement by new part" to install the new part.

(2) The mark to the left of the slash indicates whether the old part can be used in the new machine, and the mark to the right indicates whether the new part can be used in the old machine. x = Not interchangeable o = Interchangeable

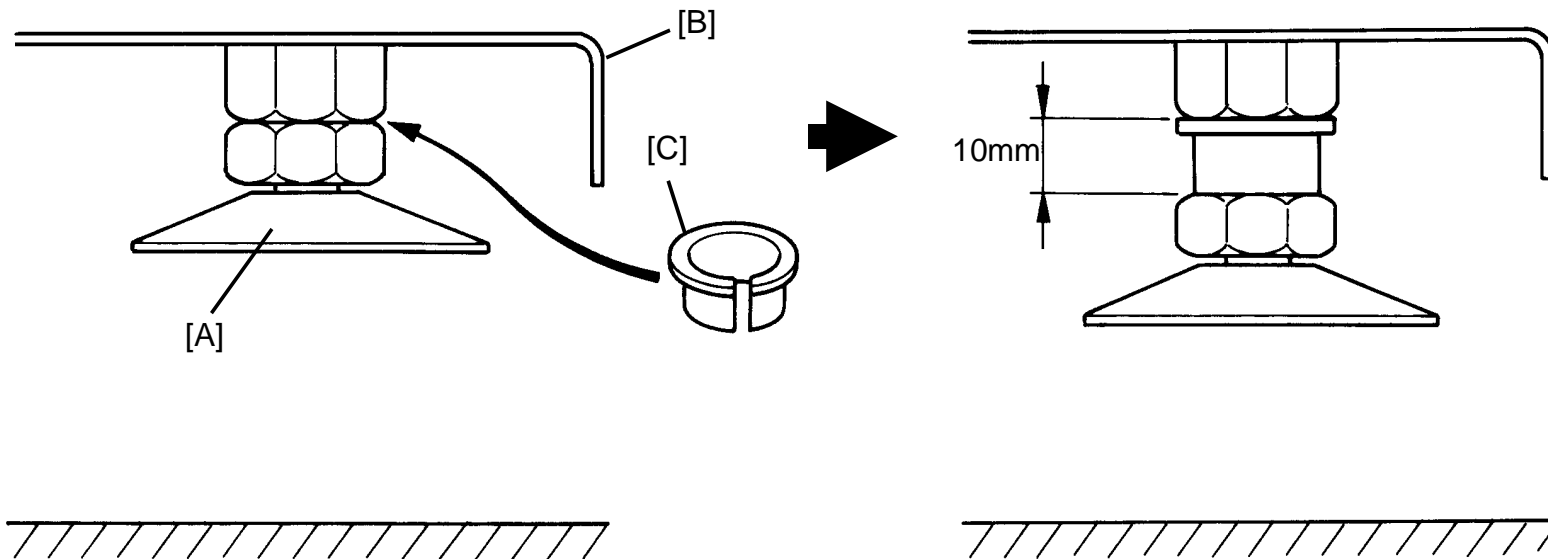
DETAILS OF MODIFICATION

It is reported that when installing the sorter stapler, it is difficult to lower the screw stand [A] because the base plate [B] obstructs inserting the pliers.

To facilitate servicing, each screw stand is lonered and a busing [C] is inserted between the nut and the machine bottom.

As the stands are lonered, the leveling shoes have been changed to thinner ones.

The old leveling shoes cannot be inserted between the stands and the floor.



| MODEL NAME | V/Hz | DESTINATION | CODE | SERIAL NUMBER |
|---------------------------|---------------------|-------------|---------|---------------------|
| SAVIN S/S for 9080 | 120/60 | USA, CANADA | A354-15 | From 1st Production |
| NRG SS428A | 120/60 | S. AMERICA | A354-16 | From 1st Production |
| RICOH ST23A | 120/60 | USA, CANADA | A354-17 | 3082040001 |
| NRG SS428A | 220, 230, 240/50 | EUROPE etc. | A354-25 | 4692040001 |
| RICOH ST23A | 220, 230, 240/50 | EUROPE etc | A354-27 | From 1st Production |
| SAVIN TANDEM S/S for 9080 | 120/60 | USA, CANADA | A354-55 | From 1st Production |
| NRG SS428B | 120/60 | S. AMERICA | A354-56 | From 1st Production |
| RICOH ST23B | 120/60 | USA, CANADA | A354-57 | 3092040001 |
| NRG SS428B | 220, 230, 240/50 | EUROPE etc. | A354-65 | 4772060001 |
| RICOH ST23B | 220, 230, 240/50 | EUROPE etc. | A354-67 | 3042040016 |

| Model | | F200 Sorter Stapler | | | | | | Volt/Hz | Date of Modification | Serial Number | |
|-------------------------|---------------|--|---------------|------------------|--------|------------------------|----------------------|---|----------------------|---------------|------|
| Modified Article | | Jogger Unit | | | | | | | | | |
| Reason for Modification | | To optimize the jogger arm home position | | | | | | | | | |
| | | | | | | | | | | | |
| | | | | | | | | | | | |
| Draw No. | Old Parts No. | | New Parts No. | Description | A.B.C. | Q'ty Used Old → New | Inter-change-ability | Part needed for replacement by new part | | Parts Catalog | |
| | | | | | Rank | | | Part No. | Description | Index No. | Page |
| | | | A3544346 | Spring - Jogger | | 0 → 1 | | | | * 60 | 19 |
| | | | 07010080B | Flat Washer - M8 | | 0 → 1 | | | | * 119 | 19 |
| | | | | | | | | | * New Index | | |
| | | | | | | | | | | | |
| | | | | | | | | | | | |
| | | | | | | | | | | | |
| | | | | | | | | | | | |
| | | | | | | | | | | | |
| | | | | | | | | | | | |
| | | | | | | | | | | | |
| | | | | | | | | | | | |
| | | | | | | | | | | | |
| | | | | | | | | | | | |
| | | | | | | | | | | | |

Rank: A : Replace with new parts immediately. B : Replace with new parts at time of repair. C : Replace with new parts at time of overhaul.

Interchangeability:

(1) When old and new parts are not mutually interchangeable, use additional parts or an assembly part as indicated in "Parts needed for replacement by new part" to install the new part.

(2) The mark to the left of the slash indicates whether the old part can be used in the new machine, and the mark to the right indicates whether the new part can be used in the old machine. x = Not interchangeable o = Interchangeable

DETAILS OF MODIFICATION

The jogger stroke is a few millimeters less than the expected value due to play between each gear. (illustration A)

To return the jogger arm to the correct home position, a spring and a washer are added to the jogger unit. (illustration B)

Due to this modification a hole was made on the jogger bracket (A3544315) to hook the spring end. (The part number of the bracket has not been changed.)

When installing the spring and washer on a machine which does not have them, please change the jogger bracket (A3544315).

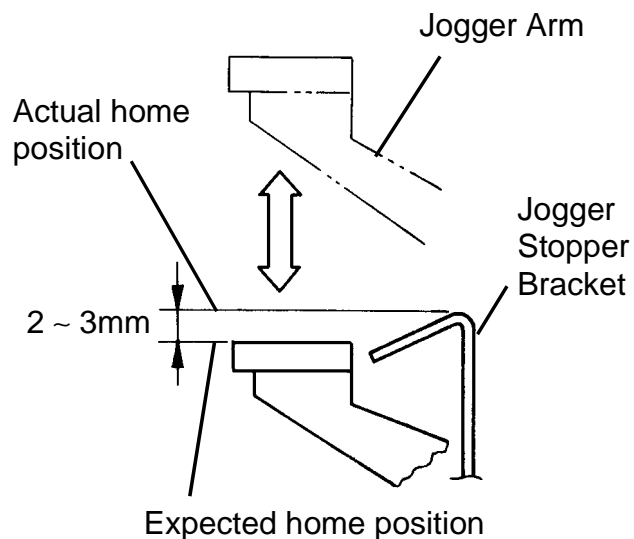


illustration A

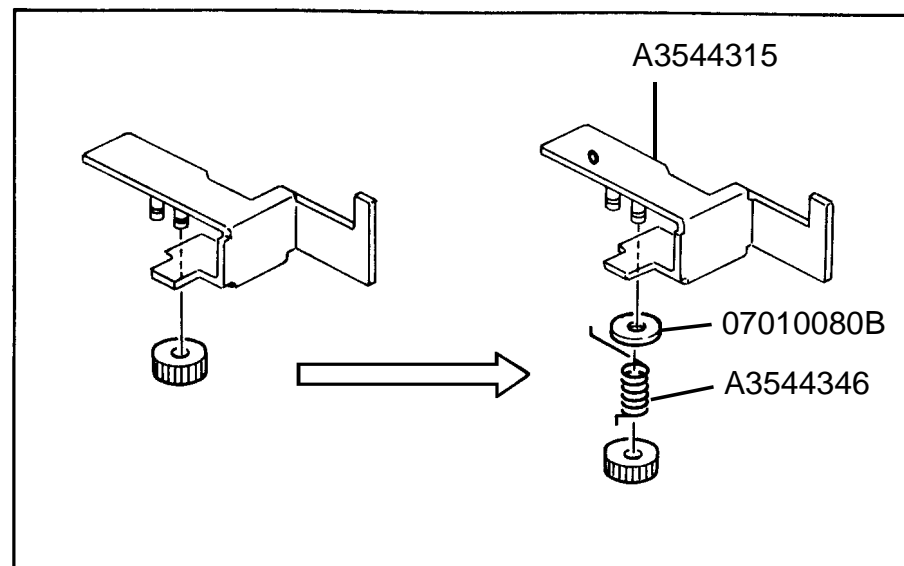


illustration B

T. Ito, Manager
Copier Technical Support

| MODEL NAME | V/Hz | DESTINATION | CODE | SERIAL NUMBER |
|---------------------------|---------------------|-------------|---------|---------------------|
| SAVIN S/S for 9080 | 120/60 | USA, CANADA | A354-15 | From 1st production |
| NRG SS428A | 120/60 | S. AMERICA | A354-16 | From 1st production |
| RICOH ST23A | 120/60 | USA, CANADA | A354-17 | A3082050001 |
| NRG SS428A | 220, 230, 240/50 | EUROPE etc. | A354-25 | 4962050001 |
| RICOH ST23A | 220, 230, 240/50 | EUROPE etc | A354-27 | A3082050176 |
| SAVIN TANDEM S/S for 9080 | 120/60 | USA, CANADA | A354-55 | From 1st production |
| NRG SS428B | 120/60 | S. AMERICA | A354-56 | From 1st production |
| RICOH ST23B | 120/60 | USA, CANADA | A354-57 | A3092060001 |
| NRG SS428B | 220, 230, 240/50 | EUROPE etc. | A354-65 | A4772060001 |
| RICOH ST23B | 220, 230, 240/50 | EUROPE etc. | A354-67 | A3092050001 |

| Model | | F200 Sorter Stapler | | | | | | Volt/Hz | Date of Modification | Serial Number | |
|-------------------------|---------------|-------------------------|---------------|---------------------|----------------|------------------------|----------------------|---|----------------------|---------------|------|
| Modified Article | | Leveling Foot Guide | | | | | | | | | |
| Reason for Modification | | To facilitate servicing | | | | | | | | | |
| | | | | | | | | | | | |
| | | | | | | | | | | | |
| Draw No. | Old Parts No. | | New Parts No. | Description | A.B.C. Rank | Q'ty Used Old → New | Inter-change-ability | Part needed for replacement by new part | | Parts Catalog | |
| | | | | | | | | Part No. | Description | Index No. | Page |
| | 54461086 | | | Leveling Foot Guide | | | | | | | |
| | | | AH013002 | Leveling Shoe | | 2 → 2 | X/O | | | 23 | 33 |
| | 11060411 | | | Bushing - 11.5mm | | 0 → 2 | | | | * 116 | 33 |
| | | | | | | | | | * New Index | | |
| | | | | | | | | | | | |
| | | | | | | | | | | | |
| | | | | | | | | | | | |
| | | | | | | | | | | | |
| | | | | | | | | | | | |
| | | | | | | | | | | | |
| | | | | | | | | | | | |
| | | | | | | | | | | | |
| | | | | | | | | | | | |

Rank: A : Replace with new parts immediately. B : Replace with new parts at time of repair. C : Replace with new parts at time of overhaul.

Interchangeability:

- (1) When old and new parts are not mutually interchangeable, use additional parts or an assembly part as indicated in "Parts needed for replacement by new part" to install the new part.
- (2) The mark to the left of the slash indicates whether the old part can be used in the new machine, and the mark to the right indicates whether the new part can be used in the old machine. x = Not interchangeable o = Interchangeable

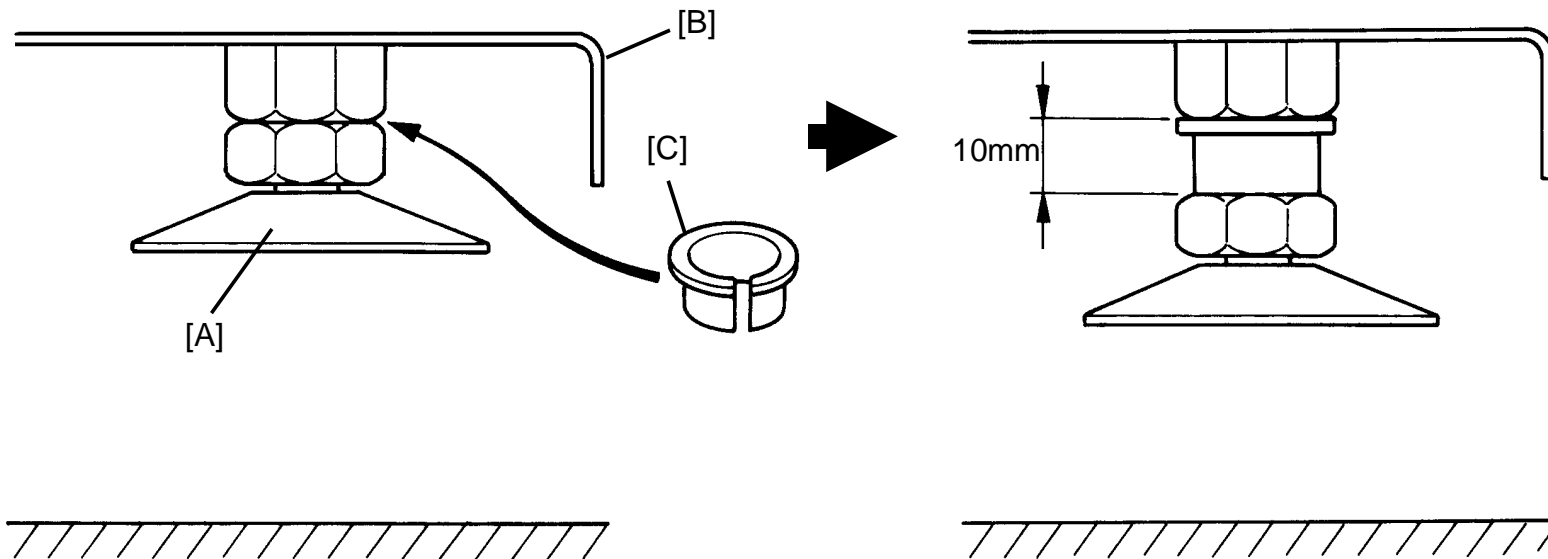
DETAILS OF MODIFICATION

It is reported that when installing the sorter stapler, it is difficult to lower the screw stand [A] because the base plate [B] obstructs inserting the pliers.

To facilitate servicing, each screw stand is lowered and a busing [C] is inserted between the nut and the machine bottom.

As the stands are lowered, the leveling shoes have been changed to thinner ones.

The old leveling shoes cannot be inserted between the stands and the floor.



| MODEL NAME | V/Hz | DESTINATION | CODE | SERIAL NUMBER |
|---------------------------|---------------------|-------------|---------|---------------------|
| SAVIN S/S for 9080 | 120/60 | USA, CANADA | A354-15 | From 1st Production |
| NRG SS428A | 120/60 | S. AMERICA | A354-16 | From 1st Production |
| RICOH ST23A | 120/60 | USA, CANADA | A354-17 | 3082040001 |
| NRG SS428A | 220, 230, 240/50 | EUROPE etc. | A354-25 | 4692040001 |
| RICOH ST23A | 220, 230, 240/50 | EUROPE etc | A354-27 | From 1st Production |
| SAVIN TANDEM S/S for 9080 | 120/60 | USA, CANADA | A354-55 | From 1st Production |
| NRG SS428B | 120/60 | S. AMERICA | A354-56 | From 1st Production |
| RICOH ST23B | 120/60 | USA, CANADA | A354-57 | 3092040001 |
| NRG SS428B | 220, 230, 240/50 | EUROPE etc. | A354-65 | 4772060001 |
| RICOH ST23B | 220, 230, 240/50 | EUROPE etc. | A354-67 | 3042040016 |

| Model | | F200 Sorter Stapler | | | | | | Volt/Hz | Date of Modification | Serial Number | |
|-------------------------|---------------|---|---------------|--------------------|--------|------------------------|----------------------|---|----------------------|---------------|------|
| Modified Article | | Entrance Guide Plate | | | | | | | | | |
| Reason for Modification | | To indicate the handle of the guide plate | | | | | | | | | |
| | | | | | | | | | | | |
| | | | | | | | | | | | |
| Draw No. | Old Parts No. | | New Parts No. | Description | A.B.C. | Q'ty Used Old → New | Inter-change-ability | Part needed for replacement by new part | | Parts Catalog | |
| | | | | | Rank | | | Part No. | Description | Index No. | Page |
| | | | A3543206 | Decal - Cover Grip | | 0 → 1 | | | | * 42 | 7 |
| | | | | | | | | | * New Index | | |
| | | | | | | | | | | | |
| | | | | | | | | | | | |
| | | | | | | | | | | | |
| | | | | | | | | | | | |
| | | | | | | | | | | | |
| | | | | | | | | | | | |
| | | | | | | | | | | | |
| | | | | | | | | | | | |
| | | | | | | | | | | | |
| | | | | | | | | | | | |
| | | | | | | | | | | | |
| | | | | | | | | | | | |

Rank: A : Replace with new parts immediately. B : Replace with new parts at time of repair. C : Replace with new parts at time of overhaul.

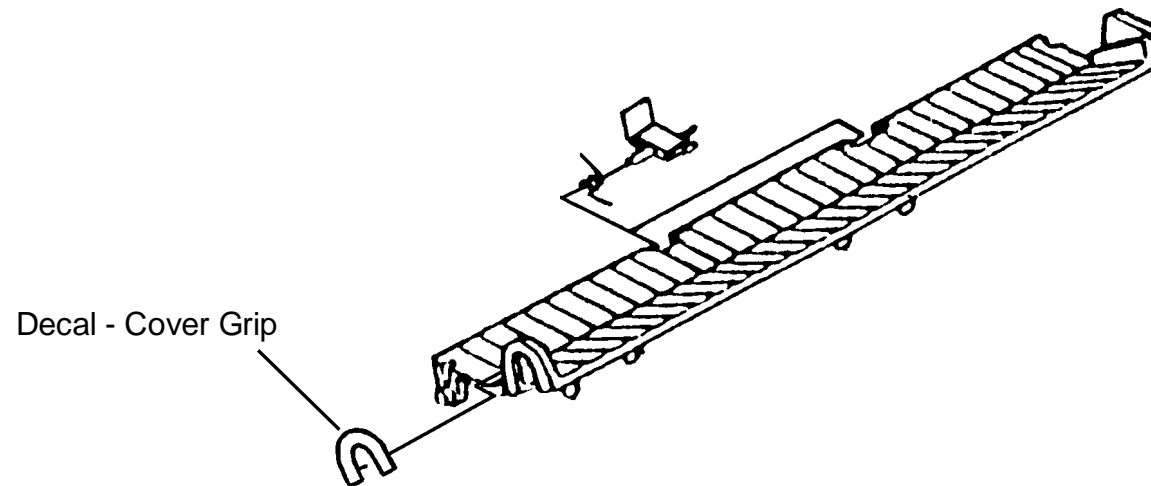
Interchangeability:

(1) When old and new parts are not mutually interchangeable, use additional parts or an assembly part as indicated in "Parts needed for replacement by new part" to install the new part.

(2) The mark to the left of the slash indicates whether the old part can be used in the new machine, and the mark to the right indicates whether the new part can be used in the old machine. x = Not interchangeable o = Interchangeable

DETAILS OF MODIFICATION

To indicate the handle of the upper entrance guide plate, a blue decal has been added. Users can easily find the handle to open the guide plate when removing misfed paper.



T. Ito, Manager
Copier Technical Support

| MODEL NAME | V/Hz | DESTINATION | CODE | SERIAL NUMBER |
|---------------------------|---------------------|-------------|---------|---------------------|
| SAVIN S/S for 9080 | 120/60 | USA, CANADA | A354-15 | From 1st Production |
| NRG SS428A | 120/60 | S. AMERICA | A354-16 | From 1st Production |
| RICOH ST23A | 120/60 | USA, CANADA | A354-17 | A3082080001 |
| NRG SS428A | 220, 230, 240/50 | EUROPE etc. | A354-25 | 4962080001 |
| RICOH ST23A | 220, 230, 240/50 | EUROPE etc | A354-27 | A3082080111 |
| SAVIN TANDEM S/S for 9080 | 120/60 | USA, CANADA | A354-55 | |
| NRG SS428B | 120/60 | S. AMERICA | A354-56 | |
| RICOH ST23B | 120/60 | USA, CANADA | A354-57 | |
| NRG SS428B | 220, 230, 240/50 | EUROPE etc. | A354-65 | |
| RICOH ST23B | 220, 230, 240/50 | EUROPE etc. | A354-67 | |

[illegible]

Rank: A : Replace with new parts immediately. B : Replace with new parts at time of repair. C : Replace with new parts at time of overhaul.

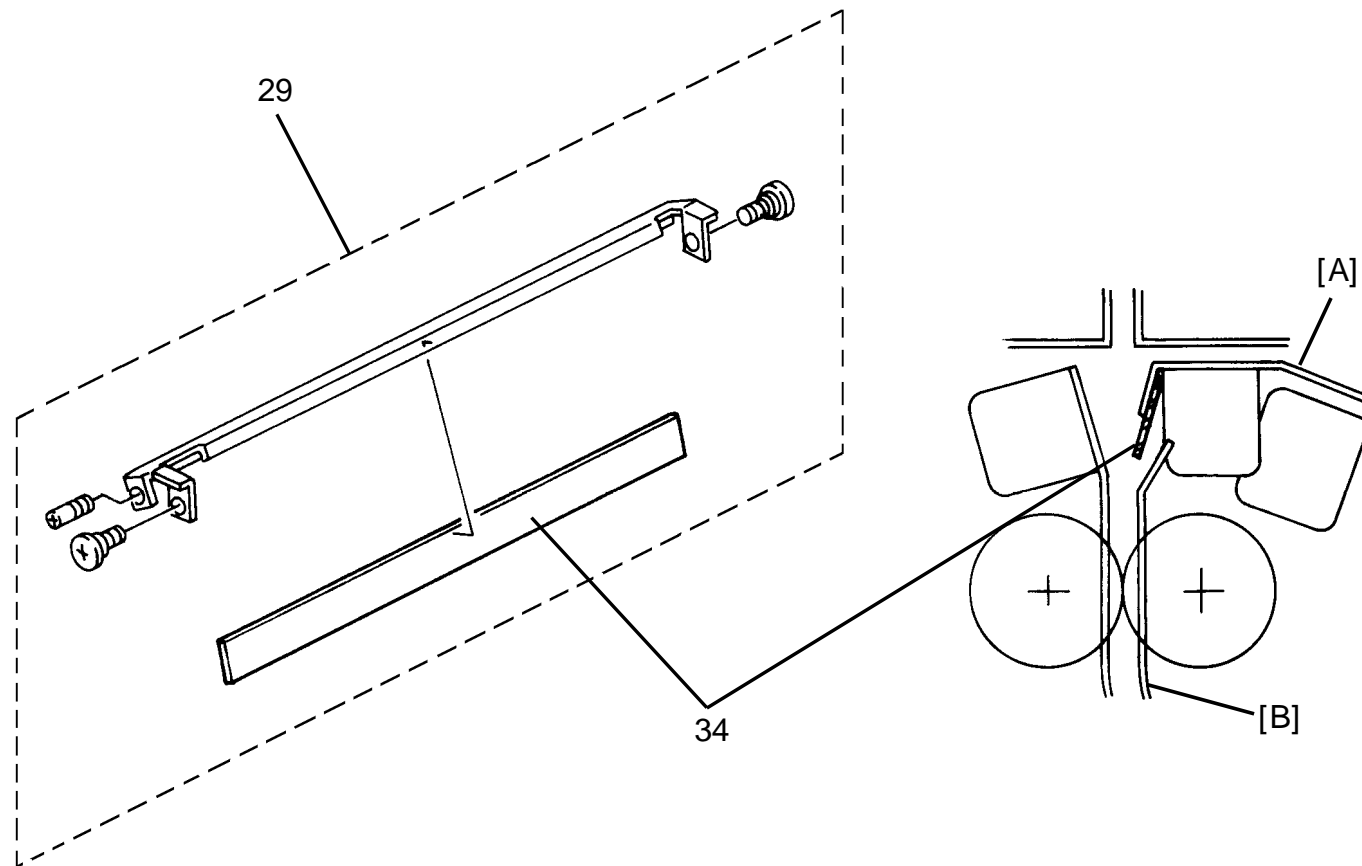
Interchangeability:

(1) When old and new parts are not mutually interchangeable, use additional parts or an assembly part as indicated in "Parts needed for replacement by new part" to install the new part.

(2) The mark to the left of the slash indicates whether the old part can be used in the new machine, and the mark to the right indicates whether the new part can be used in the old machine. x = Not interchangeable o = Interchangeable

DETAILS OF MODIFICATION

To prevent extremely curled paper from going between the Middle Guide Plate [A] and the Exit Guide Plate [B], a mylar has been added to the Middle Guide Plate.



T. Ito, Manager
Copier Technical Support

| MODEL NAME | V/Hz | DESTINATION | CODE | SERIAL NUMBER |
|---------------------------|---------------------|-------------|---------|---------------------|
| SAVIN S/S for 9080 | 120/60 | USA, CANADA | A354-15 | From 1st Production |
| NRG SS428A | 120/60 | S. AMERICA | A354-16 | From 1st Production |
| RICOH ST23A | 120/60 | USA, CANADA | A354-17 | A3082070001 |
| NRG SS428A | 220, 230, 240/50 | EUROPE etc. | A354-25 | 4962070001 |
| RICOH ST23A | 220, 230, 240/50 | EUROPE etc | A354-27 | A3082070146 |
| SAVIN TANDEM S/S for 9080 | 120/60 | USA, CANADA | A354-55 | |
| NRG SS428B | 120/60 | S. AMERICA | A354-56 | |
| RICOH ST23B | 120/60 | USA, CANADA | A354-57 | |
| NRG SS428B | 220, 230, 240/50 | EUROPE etc. | A354-65 | |
| RICOH ST23B | 220, 230, 240/50 | EUROPE etc. | A354-67 | |

MODIFICATION BULLETIN NO. 6

PAGE 1 OF 3

ISSUED ON: April 2, '93

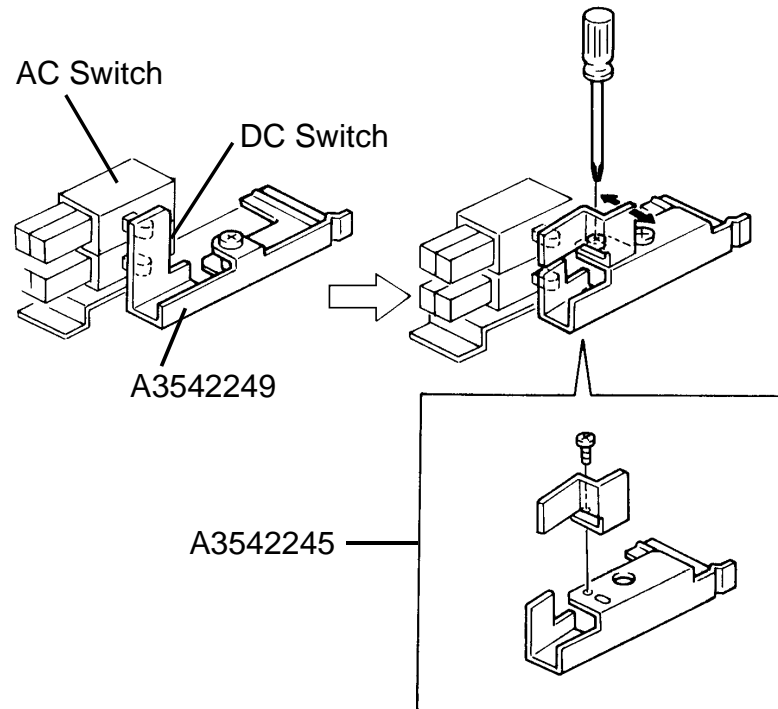
[illegible]

DETAILS OF MODIFICATION

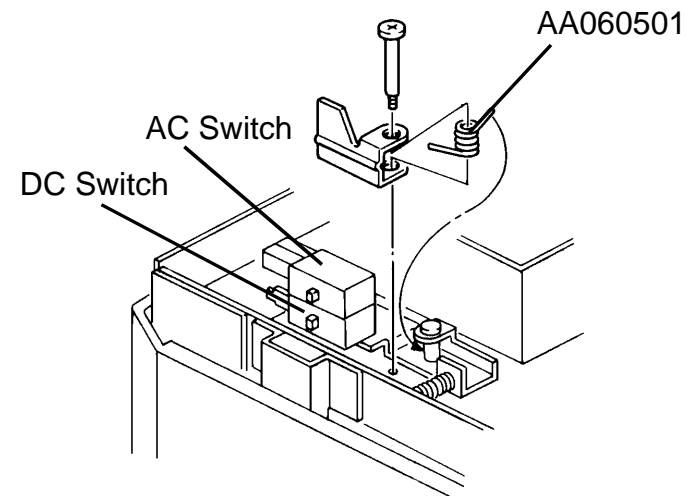
Each interlock switch for the Vertical Transport Cover and the Stapler Door consists of an AC switch in the upper position and a DC switch in the lower position. If only the DC switch is ON and the AC switch is OFF, the machine detects a closed door but the AC motor does not turn. This causes a paper jam and SC 720 is indicated.

1. To ensure that the AC switch is turned on before the DC switch, the Interlock Lever is divided into two parts. The upper switch actuator position can be changed so that the AC switch is always turned on before the DC switch. The Interlock Lever is supplied as an assembly.
2. If only the lower magnet catch of the Stapler Door is caught by the magnet, the door position may be balanced when only the DC switch is ON. To prevent this, the Interlock Switch Spring is added so that if the upper magnet catch is not caught by the magnet, neither the DC nor the AC switches is turned on.

1.



2.



T. Ito, Manager
Copier Technical Support

| MODEL NAME | V/Hz | DESTINATION | CODE | SERIAL NUMBER |
|---------------------------|---------------------|-------------|---------|---------------------|
| SAVIN S/S for 9080 | 120/60 | USA, CANADA | A354-15 | From 1st Production |
| NRG SS428A | 120/60 | S. AMERICA | A354-16 | From 1st Production |
| RICOH ST23A | 120/60 | USA, CANADA | A354-17 | A3082080001 |
| NRG SS428A | 220, 230, 240/50 | EUROPE etc. | A354-25 | 4962080001 |
| RICOH ST23A | 220, 230, 240/50 | EUROPE etc | A354-27 | A3082080111 |
| SAVIN TANDEM S/S for 9080 | 120/60 | USA, CANADA | A354-55 | From 1st Production |
| NRG SS428B | 120/60 | S. AMERICA | A354-56 | From 1st Production |
| RICOH ST23B | 120/60 | USA, CANADA | A354-57 | A3092090001 |
| NRG SS428B | 220, 230, 240/50 | EUROPE etc. | A354-65 | 4772090001 |
| RICOH ST23B | 220, 230, 240/50 | EUROPE etc. | A354-67 | A3092100006 |

| | | | | |
|--------------------------------|---|----------------|-----------------------------|----------------------|
| Model | F200 Sorter Stapler | Volt/Hz | Date of Modification | Serial Number |
| Modified Article | Stapler Decal - Original Position | | | |
| Reason for Modification | " A4 " indication has been added to the decal | | | |
| | | | | |
| | | | | |

Note on the decal has been changed as follows.

Old : Note 8 1/2" x 11" or larger copies can be stapled.

New : Note 8 1/2" x 11" / A4 or larger copies can be stapled.

| Old P/N | New P/N | Inter-change-ability | Description | Parts Catalog | |
|----------|----------|----------------------|---|---------------|----------|
| | | | | Index No. | Page |
| A3541635 | A3541637 | O/O | Stapler Decal - Original Position (RICOH) | 26 5 | 15 49 |
| A3541675 | A3541678 | O/O | Stapler Decal - Original Position (NRG) | 26 5 | 15 49 |

T. Ito, Manager
Copier Technical Support

| MODEL NAME | V/Hz | DESTINATION | CODE | SERIAL NUMBER |
|--------------------------------------|---------------------|-------------|---------|---------------------|
| SAVIN S/S for 9080 | 120/60 | USA, CANADA | A354-15 | From 1st Production |
| NRG SS428A | 120/60 | S. AMERICA | A354-16 | From 1st Production |
| RICOH ST23A | 120/60 | USA, CANADA | A354-17 | A3082070001 |
| NRG SS428A | 220, 230, 240/50 | EUROPE etc. | A354-25 | 4962070001 |
| RICOH ST23A | 220, 230, 240/50 | EUROPE etc | A354-27 | A3082070146 |
| SAVIN TANDEM S/S for 9080 | 120/60 | USA, CANADA | A354-55 | |
| NRG SS428B | 120/60 | S. AMERICA | A354-56 | |
| RICOH ST23B | 120/60 | USA, CANADA | A354-57 | |
| NRG SS428B | 220, 230, 240/50 | EUROPE etc. | A354-65 | |
| RICOH ST23B | 220, 230, 240/50 | EUROPE etc. | A354-67 | |

| | | | | |
|--------------------------------|-----------------------|----------------|-----------------------------|----------------------|
| Model | F200 Sorter Stapler | Volt/Hz | Date of Modification | Serial Number |
| Modified Article | Stapler | | | |
| Reason for Modification | Parts standardization | | | |
| | | | | |
| | | | | |

To standardize the part with that of the finisher, the stapler has been changed as follows:

| Old P/N | New P/N | Inter-change-ability | Description | Parts Catalog | |
|----------|----------|----------------------|-------------------|---------------|------|
| | | | | Index No. | Page |
| AJ011004 | AJ011006 | O/O | Stapler EH - 5RR2 | 31 | 21 |

T. Ito, Manager
Copier Technical Support

| MODEL NAME | V/Hz | DESTINATION | CODE | SERIAL NUMBER |
|---------------------------|---------------------|-------------|---------|---------------------|
| SAVIN S/S for 9080 | 120/60 | USA, CANADA | A354-15 | From 1st Production |
| NRG SS428A | 120/60 | S. AMERICA | A354-16 | From 1st Production |
| RICOH ST23A | 120/60 | USA, CANADA | A354-17 | A3082060001 |
| NRG SS428A | 220, 230, 240/50 | EUROPE etc. | A354-25 | 4962070001 |
| RICOH ST23A | 220, 230, 240/50 | EUROPE etc | A354-27 | A3082060131 |
| SAVIN TANDEM S/S for 9080 | 120/60 | USA, CANADA | A354-55 | From 1st Production |
| NRG SS428B | 120/60 | S. AMERICA | A354-56 | From 1st Production |
| RICOH ST23B | 120/60 | USA, CANADA | A354-57 | A3092060001 |
| NRG SS428B | 220, 230, 240/50 | EUROPE etc. | A354-65 | 4772060001 |
| RICOH ST23B | 220, 230, 240/50 | EUROPE etc. | A354-67 | A3092070001 |

| | | | | |
|--------------------------------|-----------------------|----------------|-----------------------------|----------------------|
| Model | F200 Sorter Stapler | Volt/Hz | Date of Modification | Serial Number |
| Modified Article | Stapler | | | |
| Reason for Modification | Parts standardization | | | |
| | | | | |
| | | | | |

To standardize the part with that of other models, the stapler has been changed as follows:

| Old P/N | New P/N | Inter-change-ability | Description | Parts Catalog | |
|----------|----------|----------------------|---------------------|---------------|------|
| | | | | Index No. | Page |
| AJ011006 | AJ011007 | O/O | Stapler - EH - 5RR4 | 31 | 21 |

S. Hamano, Assistant General Manager
Technical Support Department

| MODEL NAME | V/Hz | DESTINATION | CODE | SERIAL NUMBER |
|---------------------------|---------------------|-------------|---------|---------------|
| SAVIN S/S for 9080 | 120/60 | USA, CANADA | A354-15 | |
| NRG SS428A | 120/60 | S. AMERICA | A354-16 | |
| RICOH ST23A | 120/60 | USA, CANADA | A354-17 | |
| NRG SS428A | 220, 230, 240/50 | EUROPE etc. | A354-25 | |
| RICOH ST23A | 220, 230, 240/50 | EUROPE etc. | A354-27 | |
| SAVIN TANDEM S/S for 9080 | 120/60 | USA, CANADA | A354-55 | |
| NRG SS428B | 120/60 | S. AMERICA | A354-56 | |
| RICOH ST23B | 120/60 | USA, CANADA | A354-57 | |
| NRG SS428B | 220, 230, 240/50 | EUROPE etc. | A354-65 | |
| RICOH ST23B | 220, 230, 240/50 | EUROPE etc. | A354-67 | |

| Model | | F200 Sorter Stapler | | | | | | Volt/Hz | Date of Modification | Serial Number | | |
|-------------------------|---------------|--|---------------|-----------------------------------|------|-------------------|----------------------|--|----------------------|---------------|-------|----|
| Modified Article | | Large and Small Transport Rollers - Diagonal | | | | | | | | | | |
| Reason for Modification | | To reduce noise from idle pulley / gear | | | | | | | | | | |
| | | | | | | | | | | | | |
| | | | | | | | | | | | | |
| Draw No. | Old Parts No. | | New Parts No. | Description | Rank | Q'ty Used Old→New | Inter-change-ability | Parts needed for replacement by new part | | Parts Catalog | | |
| | | | | | | | | Part No. | Description | No. | Page | |
| | AB033035 | | A3543514 | Idle Pulley Gear - 24 / 24Z | | 1 → 1 | X/X | | | 23 | 11 | |
| | | | 07403006 | Ball Bearing - 6 x 17 x 6 | | 0 → 1 | X/X | | | X/O as a set | * 114 | 11 |
| | | | 07403906 | Ball Bearing - 6 x 15 x 5 | | 0 → 1 | X/X | | | | * 115 | 11 |
| | | | | | | | | | | | | |
| | A3543461 | | A3543462 | Large Transport Roller - Diagonal | | 1 → 1 | X/X | | X/O as a set | 12 | 11 | |
| | | | AA132020 | Spacer - 8.5 x 20 x 0.5mm | | 0 → 1 | X/X | | | * 28 | 11 | |
| | A3543466 | | A3543467 | Small Transport Roller - Diagonal | | 1 → 1 | X/X | | X/O as a set | 13 | 11 | |
| | | | AA132020 | Spacer - 8.5 x 20 x 0.5mm | | 0 → 1 | X/X | | | * 28 | 11 | |
| | | | | | | | | | | | | |
| | | | AA132020 | Spacer - 8.5 x 20 x 0.5 | | 0 → 1 | | | * New Index | * 28 | 11 | |

Rank: A : Replace with new parts immediately. B : Replace with new parts at time of repair. C : Replace with new parts at time of overhaul.

Interchangeability:

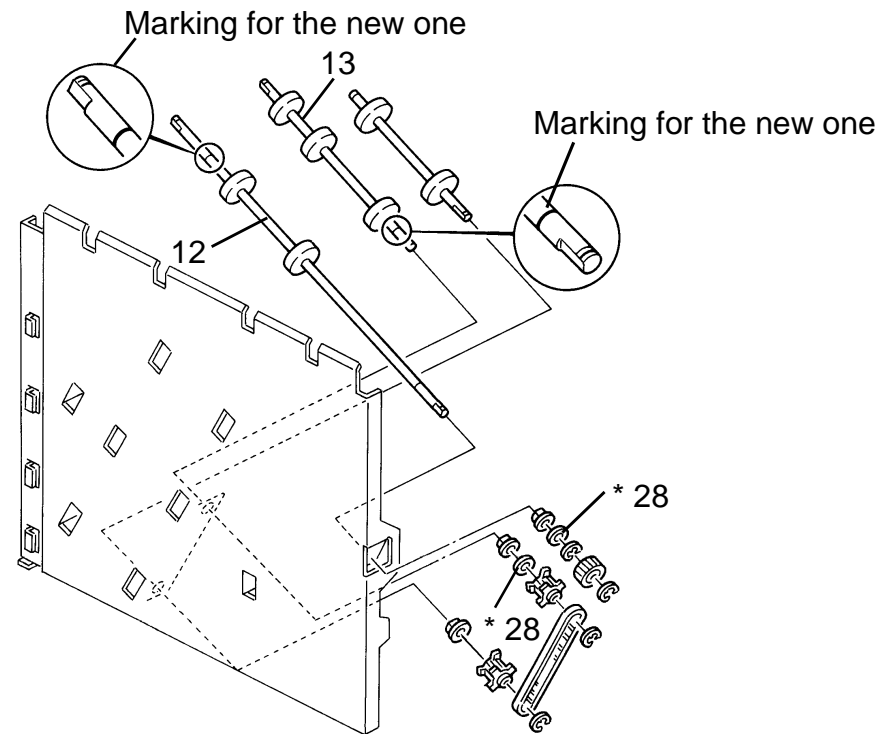
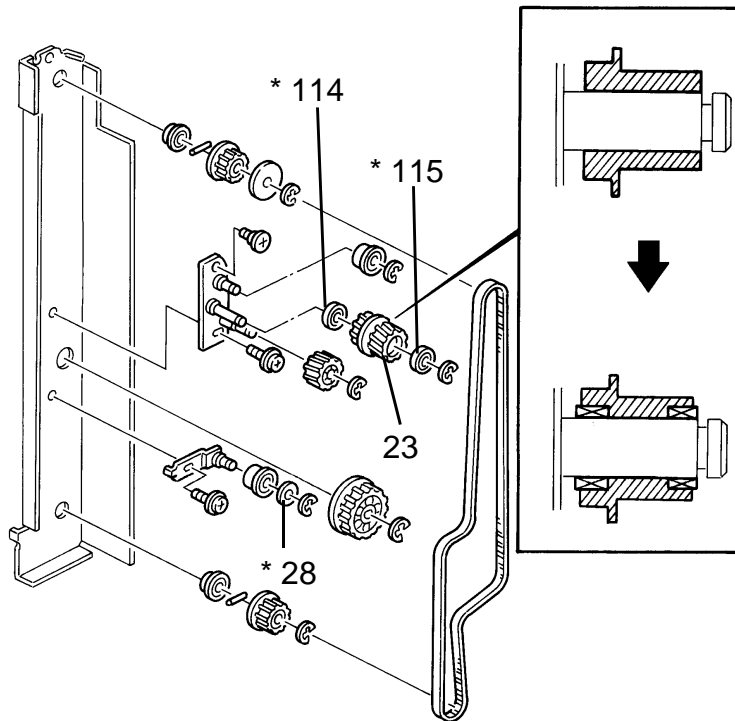
(1) When old and new parts are not mutually interchangeable, use additional parts or an assembly part as indicated in "Parts needed for replacement by new part" to install the new part.

(2) The mark to the left of the slash indicates whether the old part can be used in the new machine, and the mark to the right indicates whether the new part can be used in the old machine. x = Not interchangeable o = Interchangeable

DETAILS OF MODIFICATION

To reduce noise, the ball bearings have been added to the idle pulley gear. Besides, the spacers have been added to the transport rollers.

Accordingly, the position of the groove for the retaining ring on the transport roller has been changed.



S. Hamano, Assistant General Manager
Technical Support Department

| MODEL NAME | V/Hz | DESTINATION | CODE | SERIAL NUMBER |
|---------------------------|---------------------|-------------|---------|---------------|
| SAVIN S/S for 9080 | 120/60 | USA, CANADA | A354-15 | 3934040001 |
| NRG SS428A | 120/60 | S. AMERICA | A354-16 | 4974040001 |
| RICOH ST23A | 120/60 | USA, CANADA | A354-17 | A3084040001 |
| NRG SS428A | 220, 230, 240/50 | EUROPE etc. | A354-25 | 4964040001 |
| RICOH ST23A | 220, 230, 240/50 | EUROPE etc | A354-27 | A3084040091 |
| SAVIN TANDEM S/S for 9080 | 120/60 | USA, CANADA | A354-55 | 3984070001 |
| NRG SS428B | 120/60 | S. AMERICA | A354-56 | 4784050001 |
| RICOH ST23B | 120/60 | USA, CANADA | A354-57 | A3094040001 |
| NRG SS428B | 220, 230, 240/50 | EUROPE etc. | A354-65 | 4774040001 |
| RICOH ST23B | 220, 230, 240/50 | EUROPE etc. | A354-67 | A3094040005 |

| | | | | |
|--------------------------------|-------------------------|----------------|-----------------------------|----------------------|
| Model | Sorter Stapler for F200 | Volt/Hz | Date of Modification | Serial Number |
| Modified Article | Guide Plate Magnet | | | |
| Reason for Modification | Parts standardization | | | |
| | | | | |
| | | | | |

Due to parts standardization, the guide plate magnet has been changed.

| Old P/N | New P/N | Description | Q'ty Used | Inter-change-ability | Parts Catalog | |
|----------|----------|-------------------------|-----------|----------------------|---------------|------|
| | | | | | Index No. | Page |
| A3542022 | A5912022 | Guide Plate Magnet | 3 → 3 | O/O | 3 | 7 |
| | | | 1 → 1 | | 17 | 15 |
| | | | 1 → 1 | | 32 | 27 |
| | | | 2 → 2 | | 18 | 33 |
| | | | 1 → 1 | | 8 | 37 |
| AA043155 | AA043235 | Timing Belt - B60S3M201 | 1 → 1 | O/O | 9 | 17 |
| AJ011007 | AJ011009 | Stapler - EH-5RR5 | 1 → 1 | O/O | 31 | 21 |

M. Iwasa, Manager
Technical Support Department

| MODEL NAME | V/Hz | DESTINATION | CODE | SERIAL NUMBER |
|---------------------------|---------------------|-------------|---------|---------------|
| SAVIN S/S for 9080 | 120/60 | USA, CANADA | A354-15 | |
| NRG SS428A | 120/60 | S. AMERICA | A354-16 | |
| RICOH ST23A | 120/60 | USA, CANADA | A354-17 | |
| NRG SS428A | 220, 230, 240/50 | EUROPE etc. | A354-25 | |
| RICOH ST23A | 220, 230, 240/50 | EUROPE etc | A354-27 | |
| SAVIN TANDEM S/S for 9080 | 120/60 | USA, CANADA | A354-55 | |
| NRG SS428B | 120/60 | S. AMERICA | A354-56 | |
| RICOH ST23B | 120/60 | USA, CANADA | A354-57 | |
| NRG SS428B | 220, 230, 240/50 | EUROPE etc. | A354-65 | |
| RICOH ST23B | 220, 230, 240/50 | EUROPE etc. | A354-67 | |

| | | | | | | | | | | | | |
|-------------------------|---------------|------------------------------|---------------|-----------------------------------|------|-------------------|----------------------|--|----------------------|---------------|------|----|
| Model | | Sorter Stapler for F200 | | | | | | Volt/Hz | Date of Modification | Serial Number | | |
| Modified Article | | Rear Diagonal Cover etc. | | | | | | | | | | |
| Reason for Modification | | Due to parts standardization | | | | | | | | | | |
| | | | | | | | | | | | | |
| | | | | | | | | | | | | |
| Draw No. | Old Parts No. | | New Parts No. | Description | Rank | Q'ty Used Old→New | Inter-change-ability | Parts needed for replacement by new part | | Parts Catalog | | |
| | | | | | | | | Part No. | Description | No. | Page | |
| | A3543621 | | A3543921 | Rear Diagonal Cover | | 1 → 1 | X/X | | (RICOH) | 12 | 7 | |
| | A3543622 | | A3543922 | Rear Diagonal Cover | | 1 → 1 | X/X | | (NRG) | 12 | 7 | |
| | A3543623 | | A3543923 | Rear Diagonal Cover | | 1 → 1 | X/X | as a set X/O | (SVN) | 12 | 7 | |
| | A3543121 | | A5913121 | Rear Side Plate - Diagonal | | 1 → 1 | X/X | | | | 18 | 11 |
| | | | A5911450 | Rear Cover Bracket | | 0 → 2 | | | | | * 29 | 11 |
| | | | AA143306 | Stepped Screw - M6 | | 0 → 2 | | | | * 43 | 7 | |
| | 09504006B | | | Screw - M4 x 6 | | n → n-2 | | | | 103 | 7 | |
| | | | 03440060F | Philips Truss Head Screw - M4 x 6 | | n → n+2 | | | | 100 | 7 | |
| | | | 09504006B | Screw - M4 x 6 | | n → n+2 | | | | 106 | 11 | |
| | | | | | | | | | * New Index | | | |

Rank: A : Replace with new parts immediately. B : Replace with new parts at time of repair. C : Replace with new parts at time of overhaul.

Interchangeability:

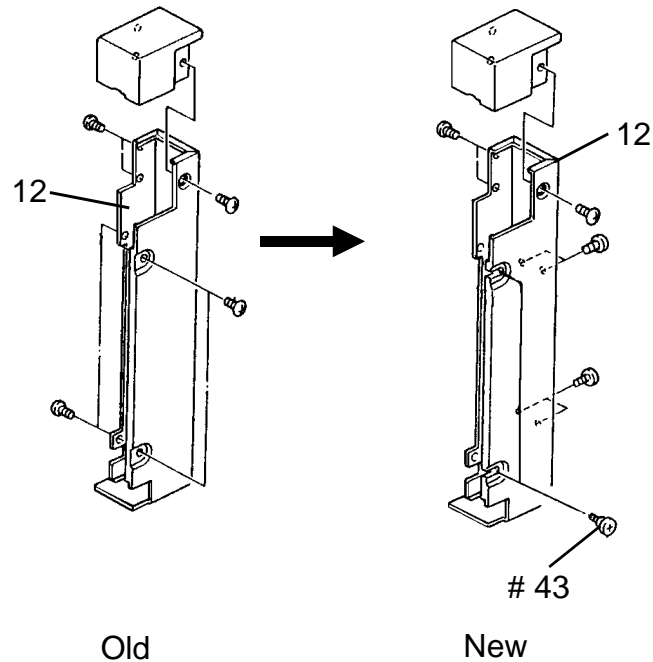
(1) When old and new parts are not mutually interchangeable, use additional parts or an assembly part as indicated in "Parts needed for replacement by new part" to install the new part.

(2) The mark to the left of the slash indicates whether the old part can be used in the new machine, and the mark to the right indicates whether the new part can be used in the old machine. x = Not interchangeable o = Interchangeable

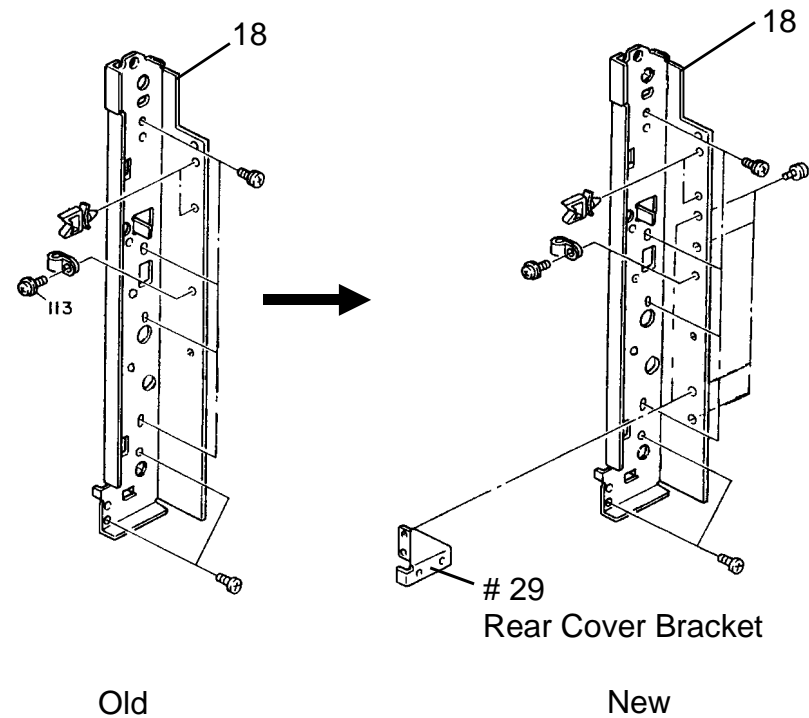
DETAILS OF MODIFICATION

Due to parts standardization with other model, the following parts have been changed as shown.

12 Rear Diagonal Cover



18 Rear Side Plate - Diagonal



M. Iwasa, Manager
Technical Support Department

| MODEL NAME | V/Hz | DESTINATION | CODE | SERIAL NUMBER |
|---------------------------|---------------------|-------------|---------|---------------|
| SAVIN S/S for 9080 | 120/60 | USA, CANADA | A354-15 | 3935020001 |
| NRG SS428A | 120/60 | S. AMERICA | A354-16 | 497505XXXXX |
| RICOH ST23A | 120/60 | USA, CANADA | A354-17 | A3085010001 |
| NRG SS428A | 220, 230, 240/50 | EUROPE etc. | A354-25 | 4965020001 |
| RICOH ST23A | 220, 230, 240/50 | EUROPE etc | A354-27 | A3085010081 |
| SAVIN TANDEM S/S for 9080 | 120/60 | USA, CANADA | A354-55 | |
| NRG SS428B | 120/60 | S. AMERICA | A354-56 | |
| RICOH ST23B | 120/60 | USA, CANADA | A354-57 | |
| NRG SS428B | 220, 230, 240/50 | EUROPE etc. | A354-65 | |
| RICOH ST23B | 220, 230, 240/50 | EUROPE etc. | A354-67 | |

| | | | | | | | | | | | | |
|-------------------------|---------------|--|-------------------------|---|------|--|----------------------|--|-------------|---------------------------------|----------------------------------|--|
| Model | | | Sorter Stapler for F200 | | | | | | Volt/Hz | Date of Modification | Serial Number | |
| Modified Article | | | Idle Pulley etc. | | | | | | | | | |
| Reason for Modification | | | Parts standardization | | | | | | | | | |
| | | | | | | | | | | | | |
| | | | | | | | | | | | | |
| Draw No. | Old Parts No. | | New Parts No. | Description | Rank | Q'ty Used Old→New | Inter-change-ability | Parts needed for replacement by new part | | Parts Catalog | | |
| | | | | | | | | Part No. | Description | No. | Page | |
| | A3543521 | | A5913521 | Joint Adjusting Pin - Diagonal | | 1 → 1 | O/O | | | 20 | 13 | |
| | A3541211 | | A5911211 | Bracket - Motor Adjusting Pin | | 1 → 1 | X/O | | | 17 | 25 | |
| | | | A4693345 | Guide Roller Stud | | 0 → 1 | | | | * 37 | 25 | |
| | | | A5911243 | Adjusting Spring - 29.1mm | | 0 → 1 | | | | * 38 | 25 | |
| | | | 54131882 | Stepped Screw | | 0 → 1 | | | | * 39 | 25 | |
| | 09514006B | | | Philips Screw with Flat Washer - M4 x 6 | | n → n-1 | | | | 106 | 25 | |
| | 52141811 | | AB030518 | Idle Pulley - 20Z | | 1 → 1 2 → 2 1 → 1 1 → 1 1 → 1 1 → 1 | O/O | | | 18 16 25 15 7 16 | 13 25 27 29 35 37 | |

Rank: A : Replace with new parts immediately. B : Replace with new parts at time of repair. C : Replace with new parts at time of overhaul. * New Index
Interchangeability:

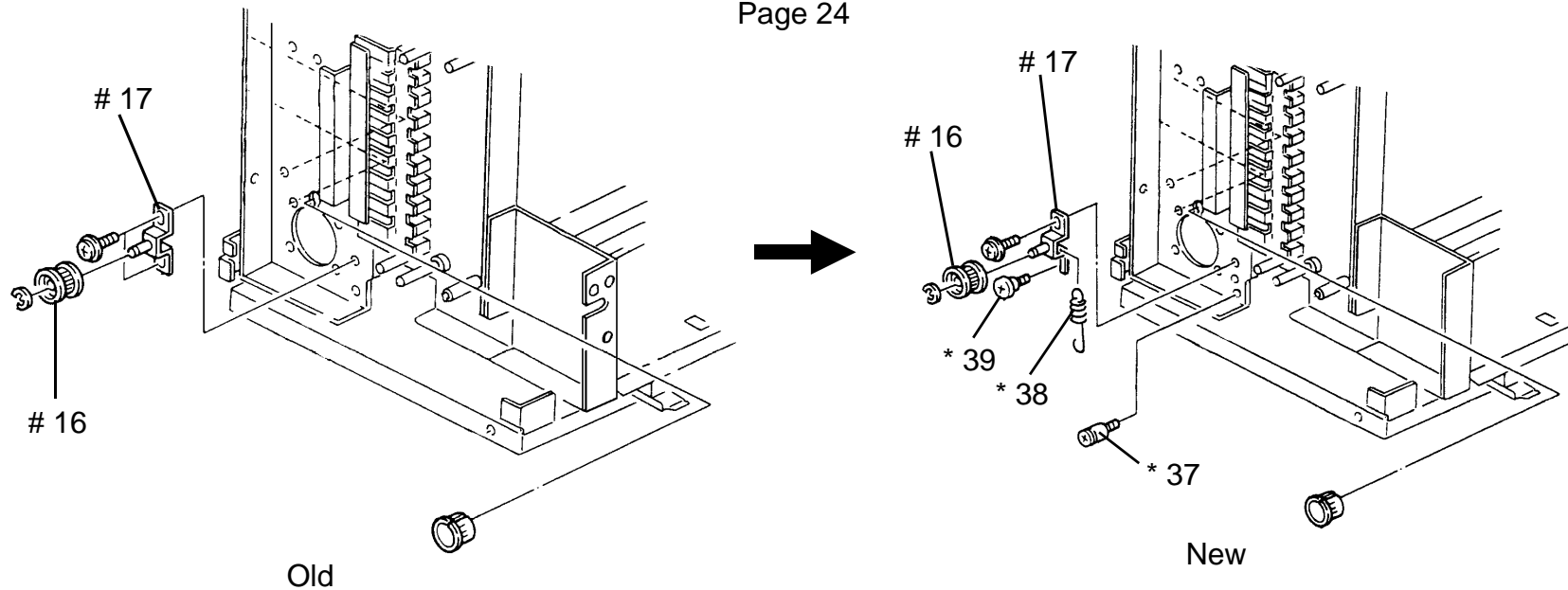
- (1) When old and new parts are not mutually interchangeable, use additional parts or an assembly part as indicated in "Parts needed for replacement by new part" to install the new part.
(2) The mark to the left of the slash indicates whether the old part can be used in the new machine, and the mark to the right indicates whether the new part can be used in the old machine. x = Not interchangeable o = Interchangeable

DETAILS OF MODIFICATION

Due to parts standardization with other model, the idle pulley (#16) and adjusting pin (# 17) have been changed.

NOTE: The guide roller stud (# 37) and the adjusting spring (29.1mm) (* 38) can be installed in the new machine only.

Page 24



M. Iwasa, Manager
Technical Support Department

| MODEL NAME | V/Hz | DESTINATION | CODE | SERIAL NUMBER |
|---------------------------|---------------------|-------------|---------|---------------|
| SAVIN S/S for 9080 | 120/60 | USA, CANADA | A354-15 | 3935030001 |
| NRG SS428A | 120/60 | S. AMERICA | A354-16 | 497504XXXX |
| RICOH ST23A | 120/60 | USA, CANADA | A354-17 | A3085030001 |
| NRG SS428A | 220, 230, 240/50 | EUROPE etc. | A354-25 | 496504XXXX |
| RICOH ST23A | 220, 230, 240/50 | EUROPE etc | A354-27 | A3085030046 |
| SAVIN TANDEM S/S for 9080 | 120/60 | USA, CANADA | A354-55 | 3985030001 |
| NRG SS428B | 120/60 | S. AMERICA | A354-56 | 478504XXXX |
| RICOH ST23B | 120/60 | USA, CANADA | A354-57 | A3095040001 |
| NRG SS428B | 220, 230, 240/50 | EUROPE etc. | A354-65 | 4775020001 |
| RICOH ST23B | 220, 230, 240/50 | EUROPE etc. | A354-67 | A3095020001 |

ISSUED ON: May 15, '95

| | | | | |
|--------------------------------|-------------------------|----------------|-----------------------------|----------------------|
| Model | Sorter Stapler for F200 | Volt/Hz | Date of Modification | Serial Number |
| Modified Article | Antistatic Brush - Exit | | | |
| Reason for Modification | Parts standardization | | | |
| | | | | |
| | | | | |

Due to parts standardization, the antistatic brush has been changed.

| Old P/N | New P/N | Description | Q'ty Used | Inter-change-ability | Parts Catalog | |
|----------|----------|-------------------------|-----------|----------------------|---------------|----------|
| | | | | | Index No. | Page |
| AA120049 | AA120072 | Antistatic Brush - Exit | 1 → 1 | O/O | 1 9 | 27 31 |

M. Iwasa, Manager
Technical Support Department

| MODEL NAME | V/Hz | DESTINATION | CODE | SERIAL NUMBER |
|---------------------------|---------------------|-------------|---------|---------------|
| SAVIN S/S for 9080 | 120/60 | USA, CANADA | A354-15 | |
| NRG SS428A | 120/60 | S. AMERICA | A354-16 | |
| RICOH ST23A | 120/60 | USA, CANADA | A354-17 | |
| NRG SS428A | 220, 230, 240/50 | EUROPE etc. | A354-25 | |
| RICOH ST23A | 220, 230, 240/50 | EUROPE etc | A354-27 | |
| SAVIN TANDEM S/S for 9080 | 120/60 | USA, CANADA | A354-55 | |
| NRG SS428B | 120/60 | S. AMERICA | A354-56 | |
| RICOH ST23B | 120/60 | USA, CANADA | A354-57 | |
| NRG SS428B | 220, 230, 240/50 | EUROPE etc. | A354-65 | |
| RICOH ST23B | 220, 230, 240/50 | EUROPE etc. | A354-67 | |

| | | | | |
|--------------------------------|--|----------------|-----------------------------|----------------------|
| Model | Sorter Stapler for F200 | Volt/Hz | Date of Modification | Serial Number |
| Modified Article | Idle Pulley / Stopper Screw | | | |
| Reason for Modification | To reduce noise from the idle pulley and stopper screw | | | |
| | | | | |
| | | | | |

To reduce noise from the idle pulley and stopper screw, the materials of these parts have been changed.

NOTE: When replacing one of these parts, also replace the other one as a set for the best results.

| Old P/N | New P/N | Description | Q'ty Used | Inter-change-ability | Parts Catalog | |
|----------|----------|-----------------|-----------|----------------------|---------------|------|
| | | | | | Index No. | Page |
| 58874185 | AB033070 | Idler Pulley | 1 → 1 | X/O | 22 | 13 |
| | | Idler Roller | 8 → 8 | | 12 | 29 |
| 58874195 | AA143462 | Stopper Screw | 1 → 1 | X/O | 21 | 13 |
| | | Idler Stud - M4 | 8 → 8 | | 11 | 29 |

M. Iwasa, Manager
Technical Support Department

| MODEL NAME | V/Hz | DESTINATION | CODE | SERIAL NUMBER |
|---------------------------|---------------------|-------------|---------|---------------|
| SAVIN S/S for 9080 | 120/60 | USA, CANADA | A354-15 | 3935040001 |
| NRG SS428A | 120/60 | S. AMERICA | A354-16 | 497505XXXX |
| RICOH ST23A | 120/60 | USA, CANADA | A354-17 | A3085040001 |
| NRG SS428A | 220, 230, 240/50 | EUROPE etc. | A354-25 | 496505XXXX |
| RICOH ST23A | 220, 230, 240/50 | EUROPE etc | A354-27 | A3085040042 |
| SAVIN TANDEM S/S for 9080 | 120/60 | USA, CANADA | A354-55 | 398505XXXX |
| NRG SS428B | 120/60 | S. AMERICA | A354-56 | 478505XXXX |
| RICOH ST23B | 120/60 | USA, CANADA | A354-57 | A3095040001 |
| NRG SS428B | 220, 230, 240/50 | EUROPE etc. | A354-65 | 477505XXXX |
| RICOH ST23B | 220, 230, 240/50 | EUROPE etc. | A354-67 | A3095040002 |

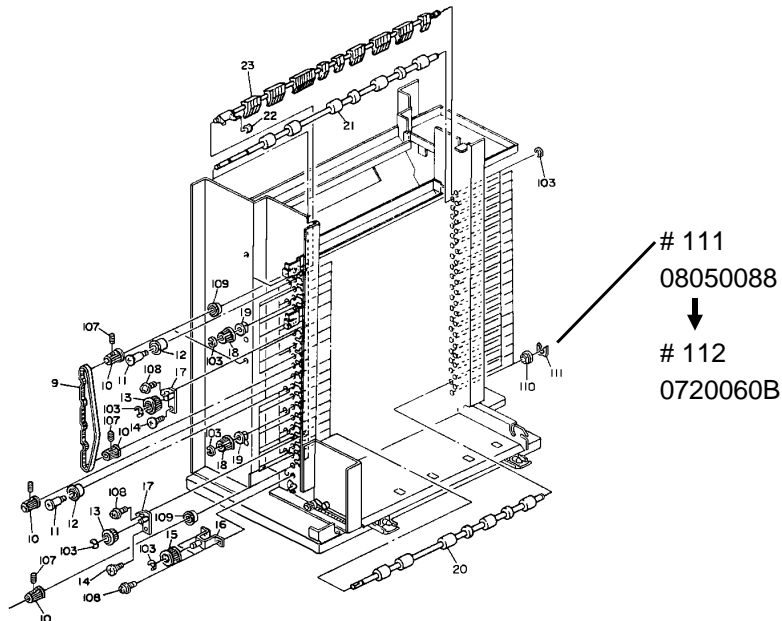
MODIFICATION BULLETIN NO. 16**PAGE 1 OF 2**

| | | | | |
|--------------------------------|-------------------------|----------------|-----------------------------|----------------------|
| Model | Sorter Stapler for F200 | Volt/Hz | Date of Modification | Serial Number |
| Modified Article | Retaining Ring - M6 | | | |
| Reason for Modification | To improve durability | | | |
| | | | | |
| | | | | |

To improve durability, the retaining ring (which is mounted) on the 20th bin's long transport roller has been changed from resin to metal.

| Old P/N | New P/N | Description | Q'ty Used | Inter-change-ability | Parts Catalog | |
|----------|-----------|---------------------|-----------|----------------------|---------------|------|
| | | | | | Index No. | Page |
| 08050088 | 07200060B | Retaining Ring - M6 | n → n-1 | X/O | 111 | 29 |
| | | Retaining Ring - M6 | n → n+1 | | * 112 | 29 |

* New Index



M. Iwasa, Manager
Technical Support Department

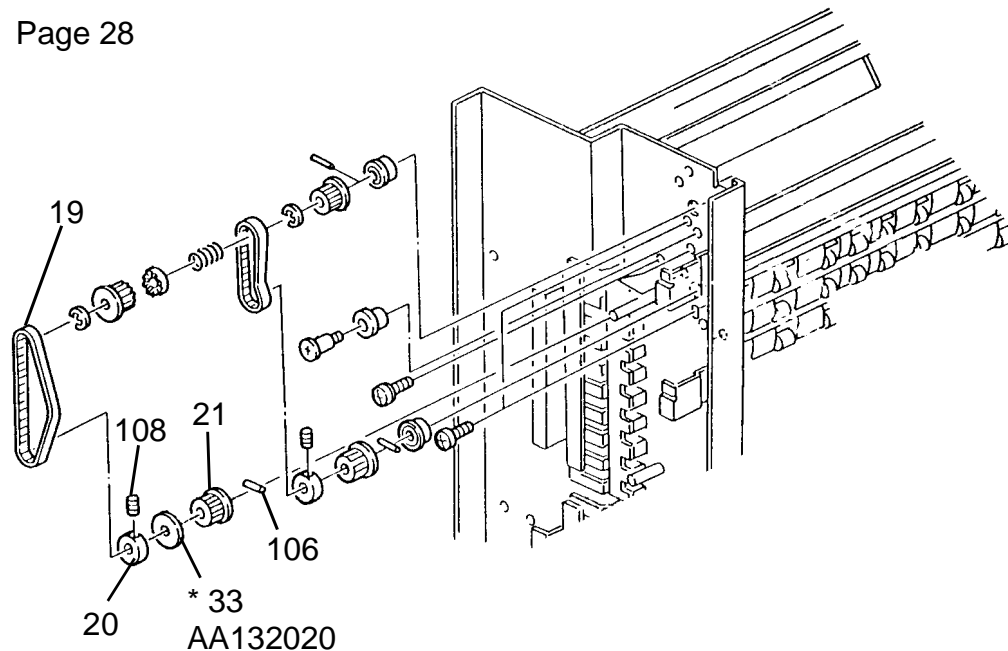
| MODEL NAME | V/Hz | DESTINATION | CODE | SERIAL NUMBER |
|------------------------------|-----------------------|-------------|-----------|---------------|
| Savin S/S for 9080 | 120 / 60 | USA, Canada | A354 - 15 | 3935030001 |
| NRG SS428A | 120 / 60 | S. America | A354 - 16 | 497507XXXX |
| RICOH ST23A | 120 / 60 | USA, Canada | A354 - 17 | A3085030001 |
| NRG SS428A | 220, 230, 240 / 50 | Europe etc. | A354 - 25 | 496507XXXX |
| RICOH ST23A | 220, 230, 240 / 50 | Europe etc. | A354 - 27 | A3085030046 |
| SAVIN TANDEM S/S for 9080 | 120 / 60 | USA, Canada | A354 - 55 | 3985030001 |
| NRG SS428B | 120 / 60 | S. America | A354 - 56 | 478507XXXX |
| RICOH ST23B | 120 / 60 | USA, Canada | A354 - 57 | A3095040001 |
| NRG SS428B | 220, 230, 240 / 50 | Europe etc. | A354 - 65 | 477507XXXX |
| RICOH ST23B | 220, 230, 240 / 50 | Europe etc. | A354 - 67 | A3095030001 |

| Model | Sorter Stapler for F200 | Volt/Hz | Date of Modification | Serial Number |
|-------------------------|---|---------|----------------------|---------------|
| Modified Article | Spacer - 8.5 x 20 x 0.5mm | | | |
| Reason for Modification | To prevent the timing belt from running off the pulley. | | | |
| | | | | |
| | | | | |

To prevent the timing belt from running off the pulley, a spacer has been added as shown in the following picture.

| New P/N | Description | Q'ty Used | Parts Catalog | |
|----------|---------------------------|-----------|---------------|------|
| | | | Index No. | Page |
| AA132020 | Spacer - 8.5 x 20 x 0.5mm | 0 → 1 | * 33 | 27 |

Page 28



M. Iwasa, Manager
Technical Support Department

| MODEL NAME | V/Hz | DESTINATION | CODE | SERIAL NUMBER |
|------------------------------|-----------------------|-------------|-----------|---------------|
| Savin S/S for 9080 | 120 / 60 | USA, Canada | A354 - 15 | 3935070001 |
| NRG SS428A | 120 / 60 | S. America | A354 - 16 | 49508XXXX |
| RICOH ST23A | 120 / 60 | USA, Canada | A354 - 17 | A3085060001 |
| NRG SS428A | 220, 230, 240 / 50 | Europe etc. | A354 - 25 | 4965070001 |
| RICOH ST23A | 220, 230, 240 / 50 | Europe etc. | A354 - 27 | A308508XXXX |
| SAVIN TANDEM S/S for 9080 | 120 / 60 | USA, Canada | A354 - 55 | 398508XXXX |
| NRG SS428B | 120 / 60 | S. America | A354 - 56 | 478508XXXX |
| RICOH ST23B | 120 / 60 | USA, Canada | A354 - 57 | A3095060001 |
| NRG SS428B | 220, 230, 240 / 50 | Europe etc. | A354 - 65 | 477508XXXX |
| RICOH ST23B | 220, 230, 240 / 50 | Europe etc. | A354 - 67 | A309508XXXX |

| | | | | |
|--------------------------------|-------------------------|----------------|-----------------------------|----------------------|
| Model | Sorter Stapler for F200 | Volt/Hz | Date of Modification | Serial Number |
| Modified Article | Harness Cover Bracket | | | |
| Reason for Modification | Parts standardization | | | |
| | | | | |
| | | | | |

Due to parts standardization, the harness cover bracket has been changed.

| Old P/N | New P/N | Description | Q'ty Used | Inter-change-ability | Parts Catalog | |
|----------|----------|-----------------------|-----------|----------------------|---------------|------|
| | | | | | Index No. | Page |
| A3546752 | A3546756 | Harness Cover Bracket | 1 → 1 | O/O | 27 | 35 |

M. Iwasa, Manager
Technical Support Department

| MODEL NAME | V/Hz | DESTINATION | CODE | SERIAL NUMBER |
|------------------------------|-----------------------|-------------|-----------|---------------|
| Savin S/S for 9080 | 120 / 60 | USA, Canada | A354 - 15 | |
| NRG SS428A | 120 / 60 | S. America | A354 - 16 | |
| RICOH ST23A | 120 / 60 | USA, Canada | A354 - 17 | |
| NRG SS428A | 220, 230, 240 / 50 | Europe etc. | A354 - 25 | |
| RICOH ST23A | 220, 230, 240 / 50 | Europe etc. | A354 - 27 | |
| SAVIN TANDEM S/S for 9080 | 120 / 60 | USA, Canada | A354 - 55 | |
| NRG SS428B | 120 / 60 | S. America | A354 - 56 | |
| RICOH ST23B | 120 / 60 | USA, Canada | A354 - 57 | |
| NRG SS428B | 220, 230, 240 / 50 | Europe etc. | A354 - 65 | |
| RICOH ST23B | 220, 230, 240 / 50 | Europe etc. | A354 - 67 | |

| | | | | |
|--------------------------------|-------------------------------------|----------------|-----------------------------|----------------------|
| Model | Sorter Stapler for F200 | Volt/Hz | Date of Modification | Serial Number |
| Modified Article | Power Supply Cord - 220 / 240V etc. | | | |
| Reason for Modification | Vender change | | | |
| | | | | |
| | | | | |

Due to a vender change, the following parts have been changed.

| Old P/N | New P/N | Description | Q'ty Used | Inter-change-ability | Parts Catalog | |
|----------|----------|--------------------------------|-----------|----------------------|---------------|------|
| | | | | | Index No. | Page |
| 28010041 | AZ000036 | Power Supply Cord - 220 / 240V | 1 → 1 | O/O | 21 | 25 |
| | | Power Supply Cord - 250V / 10A | | | | |
| 16050226 | 16603102 | Capacitor - 1000PF 50V | n → n | O/O | 155 | 41 |
| | | Capacitor - 1000μF ±5% 50V | | | | |
| 16050636 | 16607104 | Capacitor - 0.1μF | n → n | O/O | 156 | 41 |
| | | Capacitor - 100000PF 50V | | | | |

M. Iwasa, Manager
Technical Support Department

| MODEL NAME | V/Hz | DESTINATION | CODE | SERIAL NUMBER |
|------------------------------|-----------------------|-------------|-----------|---------------|
| Savin S/S for 9080 | 120 / 60 | USA, Canada | A354 - 15 | |
| NRG SS428A | 120 / 60 | S. America | A354 - 16 | |
| RICOH ST23A | 120 / 60 | USA, Canada | A354 - 17 | |
| NRG SS428A | 220, 230, 240 / 50 | Europe etc. | A354 - 25 | |
| RICOH ST23A | 220, 230, 240 / 50 | Europe etc. | A354 - 27 | |
| SAVIN TANDEM S/S for 9080 | 120 / 60 | USA, Canada | A354 - 55 | |
| NRG SS428B | 120 / 60 | S. America | A354 - 56 | |
| RICOH ST23B | 120 / 60 | USA, Canada | A354 - 57 | |
| NRG SS428B | 220, 230, 240 / 50 | Europe etc. | A354 - 65 | |
| RICOH ST23B | 220, 230, 240 / 50 | Europe etc. | A354 - 67 | |

| | | | |
|---|--|-------------------------|--------|
| Model: Sorter Stapler for F200 | | Date: 30-Jun-97 | No: 20 |
| Modified Article: Spring - Interlock Switch | | Prepared by: M.Kitajima | |
| From: QAC 1st Field Information Dept. | | | |
| Reason for Modification: | <input type="checkbox"/> Parts catalog correction <input type="checkbox"/> Vendor change <input type="checkbox"/> To meet standards <input type="checkbox"/> To facilitate assembly <input checked="" type="checkbox"/> To improve reliability () <input type="checkbox"/> Part standardization <input type="checkbox"/> Other | | |

| Old part number | New part number | Description | Qty | Int | Page | Index | Note |
|-----------------|-----------------|---------------------------|-----|-----|------|-------|------|
| AA060479 | AA060727 | Spring – Interlock Switch | 1-1 | X/O | 19 | 5 | |
| | | | | | | | |

To ensure the interlock switch function, the tension of the spring for this switch has been increased from $3.1 \pm 0.3 \text{ N}$ to $5.1 \pm 0.5 \text{ N}$.

| MODEL NAME | V/ Hz | DESTINATION | CODE | SERIAL NUMBER |
|----------------------------|--------------------|-------------|-----------|-------------------|
| Savin S/ S for 9080 | 120 / 60 | USA, Canada | A354 - 15 | Service part only |
| NRG SS428A | 120 / 60 | S. America | A354 - 16 | Service part only |
| RICOH ST23A | 120 / 60 | USA, Canada | A354 - 17 | Service part only |
| NRG SS428A | 220, 230, 240 / 50 | Europe etc. | A354 - 25 | Service part only |
| RICOH ST23A | 220, 230, 240 / 50 | Europe etc. | A354 - 27 | Service part only |
| SAVIN TANDEM S/ S for 9080 | 120 / 60 | USA, Canada | A354 - 55 | Service part only |
| NRG SS428B | 120 / 60 | S. America | A354 - 56 | Service part only |
| RICOH ST23B | 120 / 60 | USA, Canada | A354 - 57 | Service part only |
| NRG SS428B | 220, 230, 240 / 50 | Europe etc. | A354 - 65 | Service part only |
| RICOH ST23B | 220, 230, 240 / 50 | Europe etc. | A354 - 67 | Service part only |